

32303

32308

32304

32317

32310

32301-A

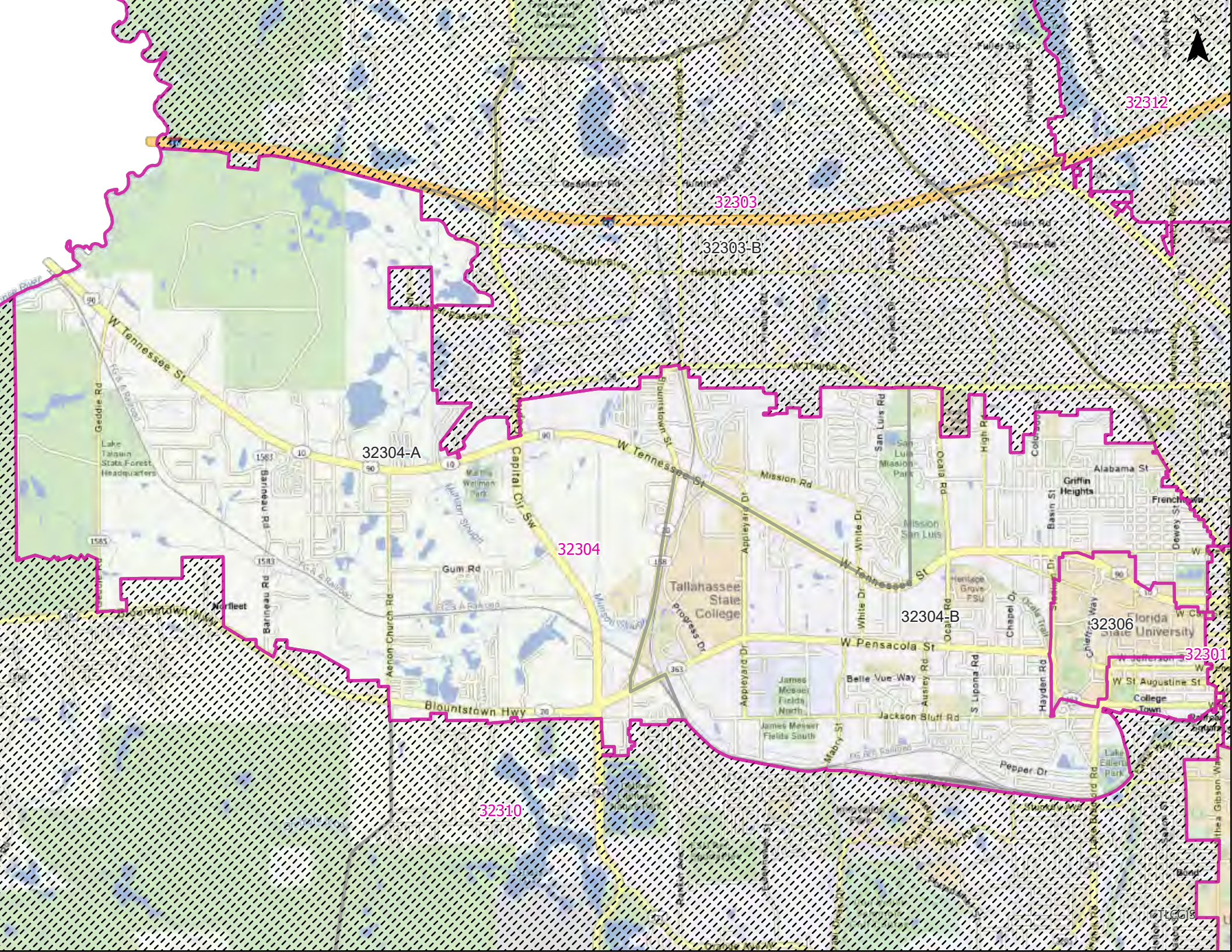
32301-B

32311

32305

TCCS





32312

32303

32303-B

32304-A

32304

32304-B

32306

32301

32310

32302

32305

32307

32308

32309

32311

32313

32314

32315

32316

32317

32318

32319

32320

32321

32322

32323

32324

32325

32326

32327

32328

32329

32330

32331

32332

32333

32334

32335

32336

32337

32338

32339

32340

32341

32342

32343

32344

32345

32346

32347

32348

32349

32350

32351

32352

32353

32354

32355

32356

32357

32358

32359

32360

32361

32362

32363

32364

32365

32366

32367

32368

32369

32370

32371

32372

32373

32374

32375

32376

32377

32378

32379

32380

32381

32382

32383

32384

32385

32386

32387

32388

32389

32390

32391

32392

32393

32394

32395

32396

32397

32398

32399

32400

32401

32402

32403

32404

32405

32406

32407

32408

32409

32410

32411

32412

32413

32414

32415

32416

32417

32418

32419

32420

32421

32422

32423

32424

32425

32426

32427

32428

32429

32430

32431

32432

32433

32434

32435

32436

32437

32438

32439

32440

32441

32442

32443

32444

32445

32446

32447

32448

32449

32450

32451

32452

32453

32454

32455

32456

32457

32458

32459

32460

32461

32462

32463

32464

32465

32466

32467

32468

32469

32470

32471

32472

32473

32474

32475

32476

32477

32478

32479

32480

32481

32482

32483

32484

32485

32486

32487

32488

32489

32490

32491

32492

32493

32494

32495

32496

32497

32498

32499

32500

32501

32502

32503

32504

32505

32506

32507

32508

32509

32510

32511

32512

32513

32514

32515

32516

32517

32518

32519

32520

32521

32522

32523

32524

32525

32526

32527

32528

32529

32530

32531

32532

32533

32534

32535

32536

32537

32538

32539

32540

32541

32542

32543

32544

32545

32546

32547

32548

32549

32550

32551

32552

32553

32554

32555

32556

32557

32558

32559

32560

32561

32562

32563

32564

32565

32566

32567

32568

32569

32570

32571

32572

32573

32574

32575

32576

32577

32578

32579

32580

32581

32582

32583

32584

32585

32586

32587

32588

32589

32590

32591

32592

32593

32594

32595

32596

32597

32598

32599

32600

32601

32602

32603

32604

32605

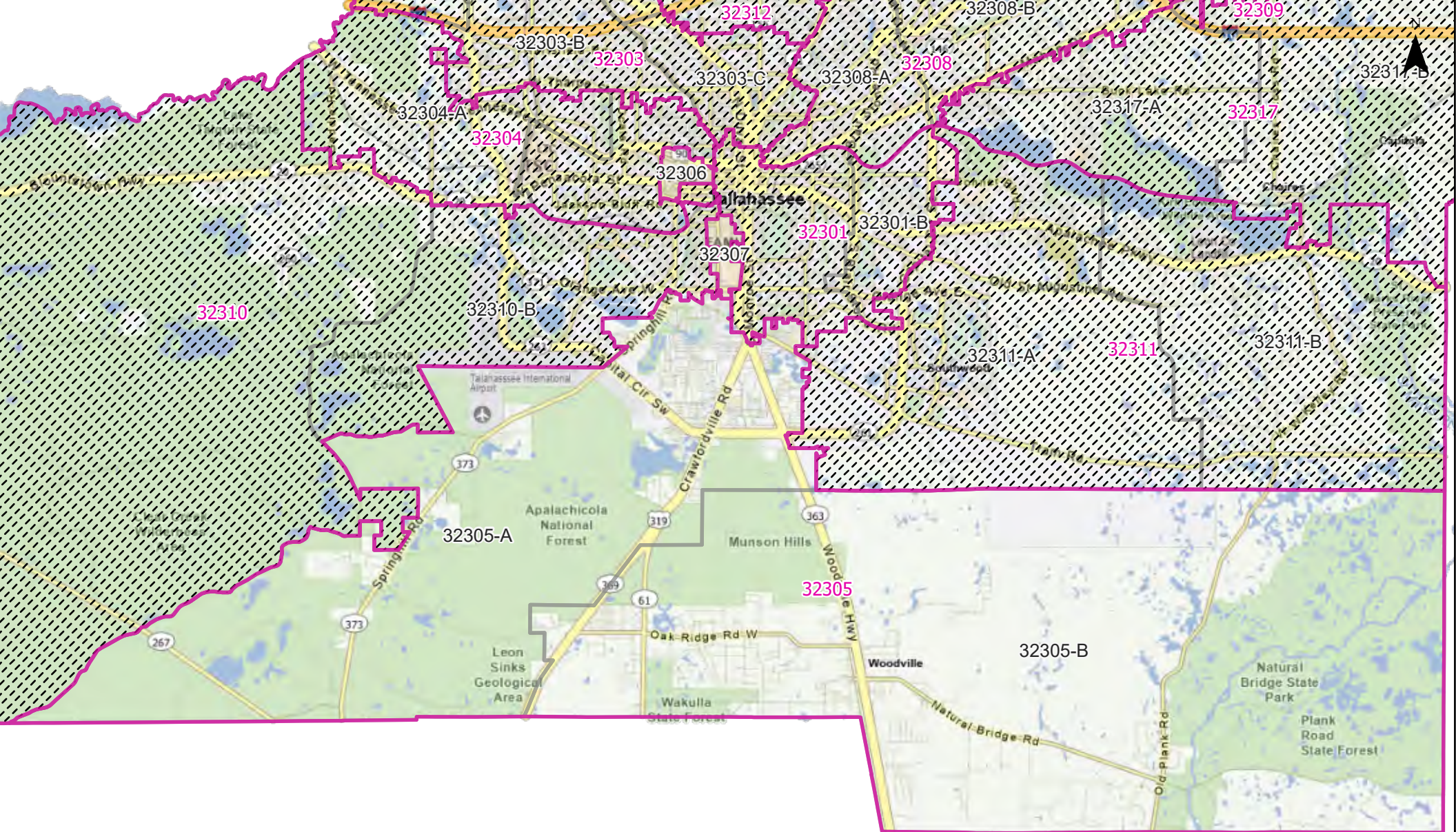
32606

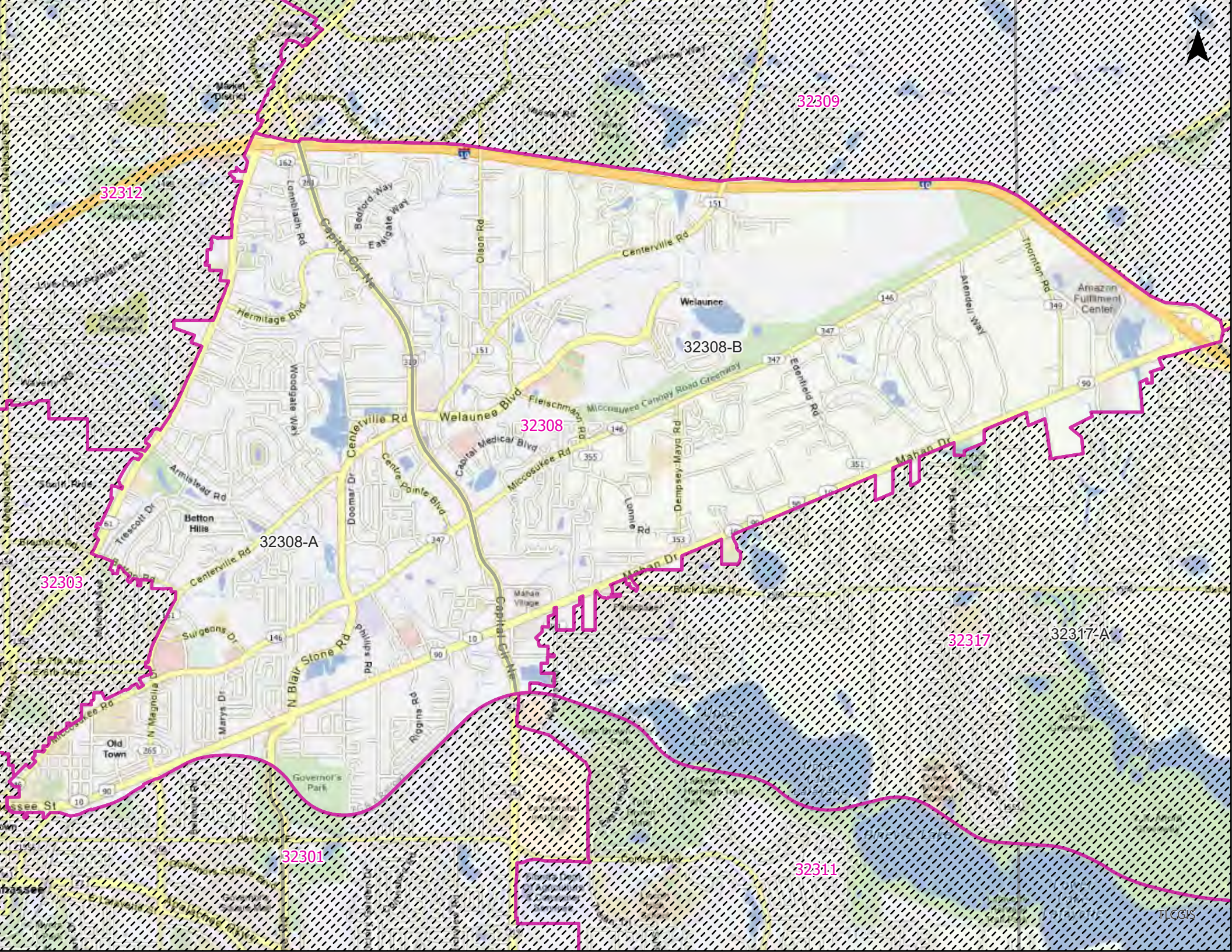
32607

32608

32609

32610





32309

32312

32308-B

32308

32308-A

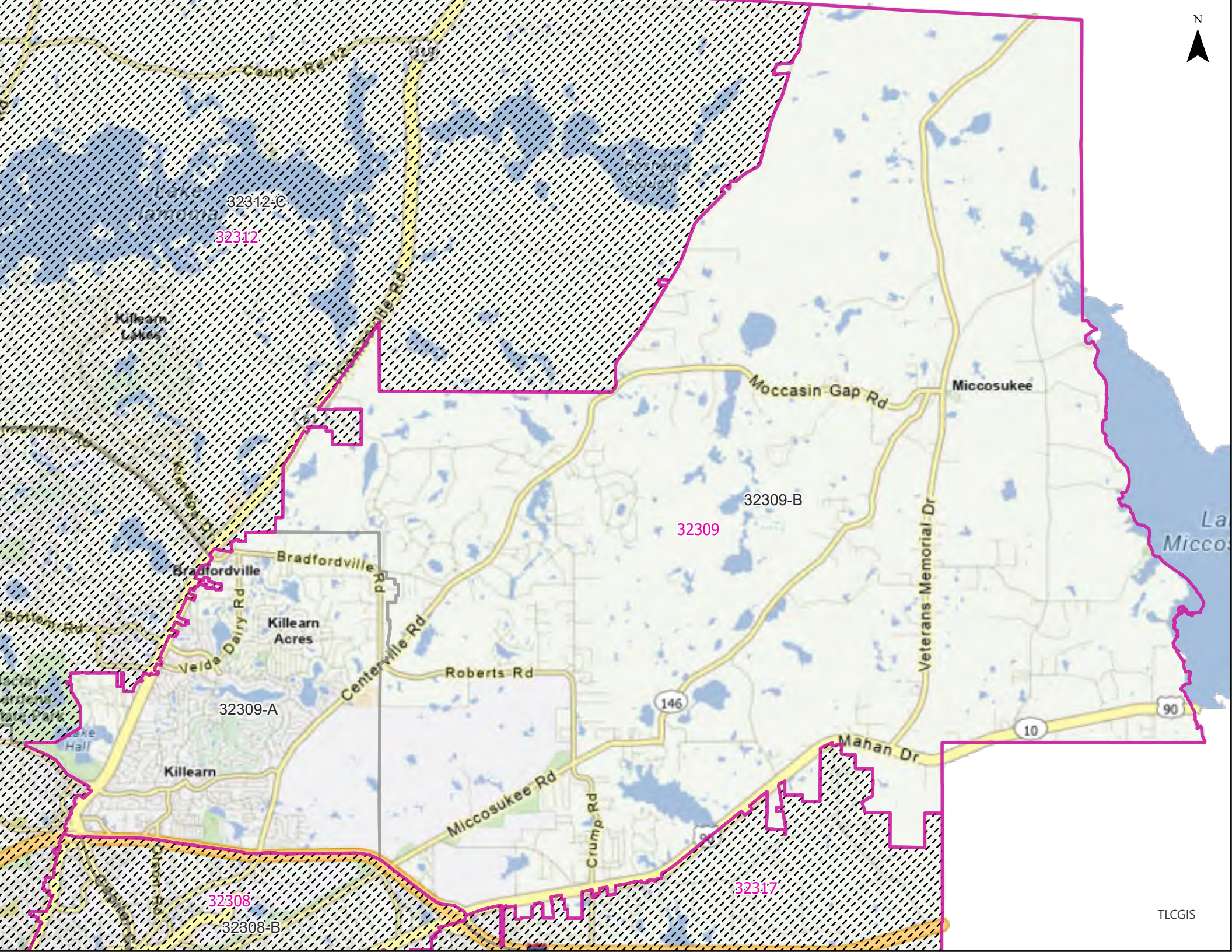
32303

32317

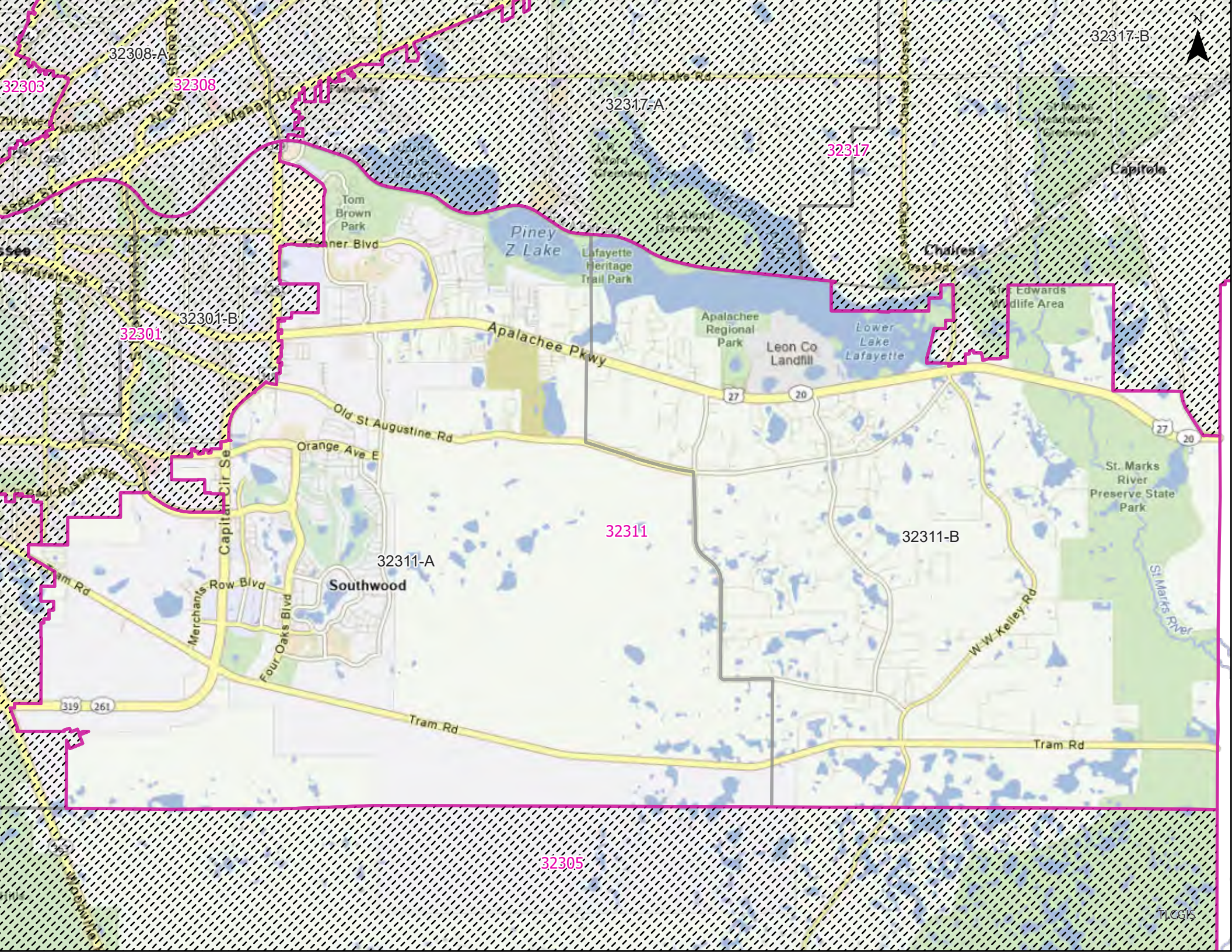
32317-A

32301

32311







32317-B

32308-A

32303

32308

32317-A

32317

Capitola

Tom Brown Park

Park Ave E

Piney Z Lake

Lafayette Heritage Trail Park

Chaires

Edwards Wildlife Area

32301

32301-B

Apalachee Pkwy

Apalachee Regional Park

Leon Co Landfill

Lower Lake Lafayette

Old St Augustine Rd

27

20

Orange Ave E

St. Marks River Preserve State Park

32311

32311-B

32311-A

Southwood

Merchants Row Blvd

Four Oaks Blvd

Capitol Cir Se

W-W Kelley Rd

St Marks River

319

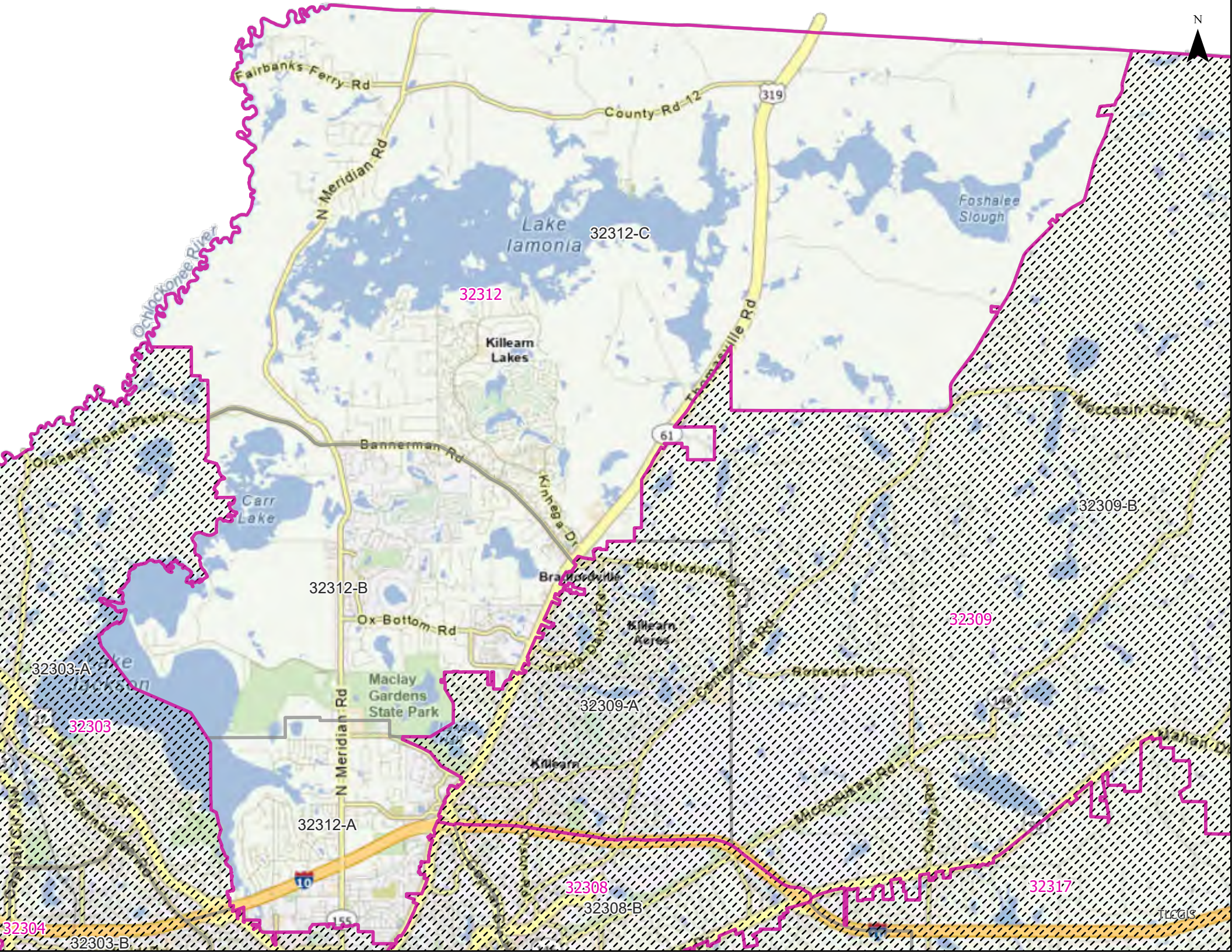
261

Tram Rd

Tram Rd

32305





Fairbanks Ferry Rd

County Rd-12

319

N Meridian Rd

Lake Jamonia

32312-C

Foshalee Slough

32312

Killearn Lakes

Thasville Rd

Ox Bottom Rd

Bannerman Rd

61

Occasin Gap Rd

Carr Lake

32309-B

32312-B

Bradfordville

Bradfordville

32309

32303-A

Ox Bottom Rd

Killearn Lakes

32309-A

Garrett Rd

32303

Maclay Gardens State Park

32312-A

Killearn

32308

32308-B

32317

32304

32303-B

TTCGIS

32309-A



Kilhearn

32309

Mahan Dr

Germantown Rd

32308-B 32308

Mahan Dr

Chaires Cross Rd

32317-B

Buck Lake Rd

32317

32317-A

St Marks Headwaters Greenway

FG & A Railroad

Upper Lake Lafayette

J. R. Alford Greenway

Alford Arm

Capitola

32301

J. R. Alford Greenway

Chaires

Chaires Cross Rd

King's Woods Wetlands

32311

Appalachian Dr

Andover Pond

Leahy Pond

Orange Ave E